

M&M ASME Safety Relief Valves



INSTALLER: PLEASE LEAVE THIS MANUAL FOR THE OWNER'S USE.



SAFETY INSTRUCTION

This safety alert symbol will be used in this manual to draw attention to safety related instructions. When used, the safety alert symbol means **ATTENTION! BECOME ALERT! YOUR SAFETY IS INVOLVED! FAILURE TO FOLLOW THE INSTRUCTIONS MAY RESULT IN A SAFETY HAZARD.**



This product can expose you to chemicals including Lead, which is known to the State of California to cause cancer and birth defects or other reproductive harm. For more information go to: www.P65Warnings.ca.gov.

DESCRIPTION

M&M diaphragm operated cast iron and diaphragm-assist operated bronze ASME Safety Relief Valves are designed to protect fired and unfired hot water pressure vessels against over pressure conditions. The diaphragm's "oversized" effective area generates a greater operating force which helps to overcome the effects of fouling. These valves feature a unique fail-safe disc with sufficient area to permit the valves to maintain their safety relief function in the event of a diaphragm rupture. These valves are designed, manufactured, tested and labeled in accordance with the requirements of Section IV of the ASME Boiler and Pressure Vessel Code. They are offered in a wide range of capacities to permit a close match with the boiler output rating.

Temperature and Pressure Limits

Maximum operating temperature: 250°F
Maximum operating pressure: 125 psig

INSTALLATION INSTRUCTIONS



WARNING: An undersized safety relief valve of inadequate relieving capacity can cause a boiler to explode. Before installing the safety relief valve, check the nameplate to make sure the pipe size, relief (opening) pressure, and BTUH rating are the same as required to protect the system against over pressure. BTUH rating and maximum operating pressure are stamped on the boiler nameplate. Failure to follow these instructions could result in serious personal injury or death and property damage.



WARNING: Improper safety relief valve installation can prevent the valve from protecting the system against over pressure conditions. The following instructions must be followed if the safety relief valve is to provide the over pressure protection required. Failure to follow these instructions could result in serious personal injury or death and property damage.

1. Safety relief valves must be installed in the top or side, at the highest practical point, of a boiler or other equipment being protected by the safety relief valve. Do not install the safety relief valve below the lowest permissible water level.
2. Safety relief valves must be installed in an upright position with the stem or spindle in the vertical position. See Figure 1, 2 or 3 for typical installations.
3. Never reduce the inlet or outlet pipe connections to the safety relief valve. Install with pipe the same diameter as the safety relief valve inlet and outlet pipe connections.
4. Do not install any shutoff valves between the safety relief valve and the equipment it is to protect against over pressurization.
5. Do not install any shutoff valves in the discharge piping from the safety relief valve.
6. Do not use pipe threaded on both ends in the drop line between the valve discharge connection and the floor or floor drain.
7. Discharge piping must be as short and as straight as possible. It must be arranged and supported so as to prevent undue stress on the safety relief valve.
8. If elbows are used in the discharge piping, they must be located as close as possible to the safety relief valve outlet.
9. Provisions must be made to assure proper drainage of discharge piping. The size and arrangement of discharge piping must be such that any pressure that may exist or develop will not reduce the relieving capacity below that required to protect the system.
10. Pipe the safety relief valve discharge to approximately 2" above the floor or to a floor drain. This will decrease the possibility of scalding someone who may be standing nearby, if the safety valve discharges.
11. Apply pipe sealing compounds sparingly to male threads only. Excessive use of pipe sealing compounds may adversely affect the operation of the safety relief valve.



CAUTION: The use of PTFE impregnated pipe compound and PTFE tape on pipe threads provides lubricity which can lead to overtightening and breakage. Do not overtighten. Failure to follow these instructions could result in property damage and/or moderate personal injury.



CAUTION: System additives may cause premature failure of the safety relief valve components. The compatibility of additives with the safety relief valve must be checked before they are used. Failure to follow these instructions could result in property damage and/or moderate personal injury.

INSTALL THE ASME SAFETY RELIEF VALVE AS NOTED:

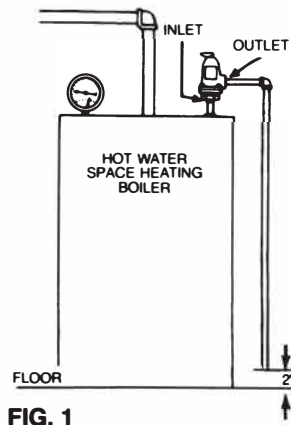
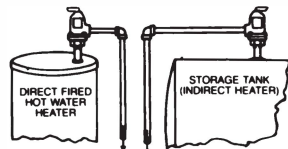


FIG. 1

Protection of Hot Water Space Heating Boilers.

- A. PREFERRED METHOD**
 1. Water Heaters: Directly on the water heater.
 2. Storage Tanks with Indirect Heater: Directly on the storage tank.



- B. ALTERNATE METHOD**
 On the hot riser coming out of the water heater or the storage tank.

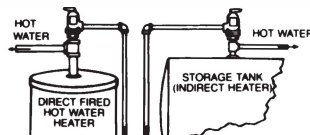


FIG. 2

Protection of Domestic Hot Water Heaters and Tanks.

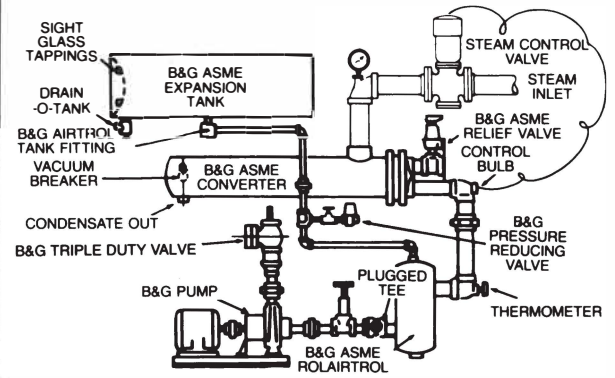


FIG. 3

Protection of Heating Exchanger Systems.

OPERATING INSTRUCTIONS

The safety relief valve is designed to protect a heating system from over pressurization. The safety relief valve does not operate unless there is an over pressure condition.

1. If the safety relief valve discharges periodically, it is an indication that the system has lost its air cushion in the compression or expansion tanks. To determine if this is the case, initiate the following test:
 - a. Bladder or diaphragm style pre-charged tanks: Isolate the system from the tank, then bleed the water from the tank. Place a tire-type pressure gauge on the air valve on the tank. If the pressure is zero, the cushion is lost. The absence of the cushion may be from a leaking air valve. To check if this is the case, add some air to the tank and place some liquid on the valve stem area. If the liquid bubbles, the valve is leaking and must be replaced (see Instruction Manual A01500 for valve replacement). If the absence of cushion was not because of the leaking valve, then the bladder or diaphragm is leaking and the bladder must either be replaced (for the "B" Series) or the tank must be replaced (for the "D" Series). See Instruction Manual A01500 for bladder replacement.
 - b. Conventional pressure tanks: Shut off the boiler for approximately 30 minutes and check to see that the boiler pressure gauge reading is near the reducing valve setting (if it is not, the reducing valve is not working properly and the setting may need to be readjusted, or the valve needs to be replaced – see Reducing Valve Instruction Manual V55999 under Pressure Setting for setting adjustment. Turn the boiler on. If within 8-9 minutes the pressure gauge at the boiler indicates a value within 10% of the relief valve setting, then the tank is waterlogged and needs to be drained and re-charged (See Instruction Manual S10300 for drain and air-charge procedures).

WARNING: Scale buildup from frequent discharging of safety relief valve can prevent safety relief valve from being able to discharge its rated capacity. The causes of frequent discharging such as a water logged compression tank must be immediately corrected. Failure to follow these instructions could result in serious personal injury or death and property damage.

2. The safety relief valve pressure setting is not field adjustable and must not be tampered with.

WARNING: Attempts to change safety relief valve setting will prevent it from relieving at rated capacity and thus causing the boiler to explode. Do not attempt to adjust the pressure setting of the safety relief valve. Failure to follow these instructions could result in serious personal injury or death and property damage.

SERVICE INSTRUCTIONS

1. The operating condition of the safety relief valve should be checked as follows every 30 days that the boiler, or other system component that the relief valve is protecting is in operation, or after any prolonged period of inactivity:

WARNING: The uncontrolled discharge of hot water from the safety relief valve can be very hazardous and could scald anyone in the vicinity. Make sure that proper discharge piping is in place at all times. Failure to follow these instructions could result in serious personal injury or death and property damage.

- a) Shut off the circulating pump and the fuel input to the boiler.
- b) Isolate the boiler from the system by closing shutoff valves, leaving the expansion tank valve open and opening the shut off valve installed ahead of the pressure reducing valve.
- c) Lift the manual opening lever on top of the relief valve to the full open position and hold it open for at least five seconds or until clean water is discharged.
- d) Release the lever and allow the relief valve to snap closed. If the relief valve leaks, operate the manual opening lever several more times to clear the seat of any foreign material that is preventing proper seating.
- e) If the relief valve continues to leak, it must be replaced before the boiler is returned to operation.

WARNING: Scale buildup from the continuous discharge of the safety relief valve will prevent the safety relief valve from discharging its rated capacity should an over pressurization condition occur. Immediately shut down the boiler and replace the safety relief valve should this condition occur. Failure to follow these instructions could result in serious personal injury or death and property damage.

- f) After it has been determined that the relief valve is not leaking, return the system to operation by reversing the steps in a) and b) above.

2. When the above test is performed, also inspect the safety relief valve for signs of corrosion, damage or scale buildup. Inspect and make sure the discharge line is clear.

WARNING: Corrosion, scale buildup, leakage or damage to safety relief valve are indications the safety relief valve may fail to provide over pressurization protection. Every 30 days the safety relief valve must be inspected and if any of the above conditions are noted it must be replaced. Failure to follow these instructions could result in serious personal injury or death and property damage.

COMMERCIAL WARRANTY

Warranty. For goods sold to commercial buyers, Seller warrants the goods sold to Buyer hereunder (with the exception of membranes, seals, gaskets, elastomer materials, coatings and other “wear parts” or consumables all of which are not warranted except as otherwise provided in the quotation or sales form) will be (i) be built in accordance with the specifications referred to in the quotation or sales form, if such specifications are expressly made a part of this Agreement, and (ii) free from defects in material and workmanship for a period of one (1) year from the date of installation or two (2) years from the date of manufacture, whichever shall occur first, unless a longer period is specified in the product documentation (the “Warranty”).

Except as otherwise required by law, Seller shall, at its option and at no cost to Buyer, either repair or replace any product which fails to conform with the Warranty provided Buyer gives written notice to Seller of any defects in material or workmanship within ten (10) days of the date when any defects or non-conformance are first manifest. Under either repair or replacement option, Seller shall not be obligated to remove or pay for the removal of the defective product or install or pay for the installation of the replaced or repaired product and Buyer shall be responsible for all other costs, including, but not limited to, service costs, shipping fees and expenses. Seller shall have sole discretion as to the method or means of repair or replacement. Buyer’s failure to comply with Seller’s repair or replacement directions shall terminate Seller’s obligations under this Warranty and render the Warranty void. Any parts repaired or replaced under the Warranty are warranted only for the balance of the warranty period on the parts that were repaired or replaced. Seller shall have no warranty obligations to Buyer with respect to any product or parts of a product that have been: (a) repaired by third parties other than Seller or without Seller’s written approval; (b) subject to misuse, misapplication, neglect, alteration, accident, or physical damage; (c) used in a manner contrary to Seller’s instructions for installation, operation and maintenance; (d) damaged from ordinary wear and tear, corrosion, or chemical attack; (e) damaged due to abnormal conditions, vibration, failure to properly prime, or operation without flow; (f) damaged due to a defective power supply or improper electrical protection; or (g) damaged resulting from the use of accessory equipment not sold or approved by Seller. In any case of products not manufactured by Seller, there is no warranty from Seller; however, Seller will extend to Buyer any warranty received from Seller’s supplier of such products.

THE FOREGOING WARRANTY IS EXCLUSIVE AND IN LIEU OF ANY AND ALL OTHER EXPRESS OR IMPLIED WARRANTIES, GUARANTEES, CONDITIONS OR TERMS OF WHATEVER NATURE RELATING TO THE GOODS PROVIDED HEREUNDER, INCLUDING WITHOUT LIMITATION ANY IMPLIED WARRANTIES OF MERCHANTABILITY AND FITNESS FOR A PARTICULAR PURPOSE, WHICH ARE HEREBY EXPRESSLY DISCLAIMED AND EXCLUDED. EXCEPT AS OTHERWISE REQUIRED BY LAW, BUYER’S EXCLUSIVE REMEDY AND SELLER’S AGGREGATE LIABILITY FOR BREACH OF ANY OF THE FOREGOING WARRANTIES ARE LIMITED TO REPAIRING OR REPLACING THE PRODUCT AND SHALL IN ALL CASES BE LIMITED TO THE AMOUNT PAID BY THE BUYER FOR THE DEFECTIVE PRODUCT. IN NO EVENT SHALL SELLER BE LIABLE FOR ANY OTHER FORM OF DAMAGES, WHETHER DIRECT, INDIRECT, LIQUIDATED, INCIDENTAL, CONSEQUENTIAL, PUNITIVE, EXEMPLARY OR SPECIAL DAMAGES, INCLUDING BUT NOT LIMITED TO LOSS OF PROFIT, LOSS OF ANTICIPATED SAVINGS OR REVENUE, LOSS OF INCOME, LOSS OF BUSINESS, LOSS OF PRODUCTION, LOSS OF OPPORTUNITY OR LOSS OF REPUTATION.

LIMITED CONSUMER WARRANTY

Warranty. For goods sold for personal, family or household purposes, Seller warrants the goods purchased hereunder (with the exception of membranes, seals, gaskets, elastomer materials, coatings and other “wear parts” or consumables all of which are not warranted except as otherwise provided in the quotation or sales form) will be free from defects in material and workmanship for a period of one (1) year from the date of installation or two (2) years from the product date code, whichever shall occur first, unless a longer period is provided by law or is specified in the product documentation (the “Warranty”).

Except as otherwise required by law, Seller shall, at its option and at no cost to Buyer, either repair or replace any product which fails to conform with the Warranty provided Buyer gives written notice to Seller of any defects in material or workmanship within ten (10) days of the date when any defects or non-conformance are first manifest. Under either repair or replacement option, Seller shall not be obligated to remove or pay for the removal of the defective product or install or pay for the installation of the replaced or repaired product and Buyer shall be responsible for all other costs, including, but not limited to, service costs, shipping fees and expenses. Seller shall have sole discretion as to the method or means of repair or replacement. Buyer's failure to comply with Seller's repair or replacement directions shall terminate Seller's obligations under this Warranty and render this Warranty void. Any parts repaired or replaced under the Warranty are warranted only for the balance of the warranty period on the parts that were repaired or replaced. The Warranty is conditioned on Buyer giving written notice to Seller of any defects in material or workmanship of warranted goods within ten (10) days of the date when any defects are first manifest.

Seller shall have no warranty obligations to Buyer with respect to any product or parts of a product that have been: (a) repaired by third parties other than Seller or without Seller's written approval; (b) subject to misuse, misapplication, neglect, alteration, accident, or physical damage; (c) used in a manner contrary to Seller's instructions for installation, operation and maintenance; (d) damaged from ordinary wear and tear, corrosion, or chemical attack; (e) damaged due to abnormal conditions, vibration, failure to properly prime, or operation without flow; (f) damaged due to a defective power supply or improper electrical protection; or (g) damaged resulting from the use of accessory equipment not sold or approved by Seller. In any case of products not manufactured by Seller, there is no warranty from Seller; however, Seller will extend to Buyer any warranty received from Seller's supplier of such products.

THE FOREGOING WARRANTY IS PROVIDED IN PLACE OF ALL OTHER EXPRESS WARRANTIES. ALL IMPLIED WARRANTIES, INCLUDING BUT NOT LIMITED TO THE IMPLIED WARRANTIES OF MERCHANTABILITY AND FITNESS FOR A PARTICULAR PURPOSE, ARE LIMITED TO ONE (1) YEAR FROM THE DATE OF INSTALLATION OR TWO (2) YEARS FROM THE PRODUCT DATE CODE, WHICHEVER SHALL OCCUR FIRST. EXCEPT AS OTHERWISE REQUIRED BY LAW, BUYER'S EXCLUSIVE REMEDY AND SELLER'S AGGREGATE LIABILITY FOR BREACH OF ANY OF THE FOREGOING WARRANTIES ARE LIMITED TO REPAIRING OR REPLACING THE PRODUCT AND SHALL IN ALL CASES BE LIMITED TO THE AMOUNT PAID BY THE BUYER FOR THE DEFECTIVE PRODUCT. IN NO EVENT SHALL SELLER BE LIABLE FOR ANY OTHER FORM OF DAMAGES, WHETHER DIRECT, INDIRECT, LIQUIDATED, INCIDENTAL, CONSEQUENTIAL, PUNITIVE, EXEMPLARY OR SPECIAL DAMAGES, INCLUDING BUT NOT LIMITED TO LOSS OF PROFIT, LOSS OF ANTICIPATED SAVINGS OR REVENUE, LOSS OF INCOME, LOSS OF BUSINESS, LOSS OF PRODUCTION, LOSS OF OPPORTUNITY OR LOSS OF REPUTATION.

Some states do not allow limitations on how long an implied warranty lasts, so the above limitation may not apply to you. Some states do not allow the exclusion or limitation of incidental or consequential damages, so the above exclusions may not apply to you. This warranty gives you specific legal rights, and you may also have other rights which may vary from state to state.

To make a warranty claim, check first with the dealer from whom you purchased the product or call +1-847-966-3700 for the name and location of the nearest dealer providing warranty service.



Xylem Inc.
8200 N. Austin Avenue
Morton Grove, Illinois 60053
Phone: (847) 966-3700
Fax: (847) 965-8379
www.xylem.com/mcdonnellmiller

McDonnell & Miller is a trademark of Xylem Inc. or one of its subsidiaries.
© 2021 Xylem Inc. V55693G May 2021 Part No. V55693

