

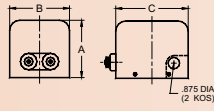
# Standard Replacement Series - Baseless



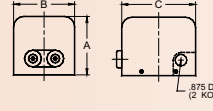
Primary 120V\*, Secondary 10,000 V, 22 mA, 60 Hz, Mid Point Ground

## A10-SF10

C10-SF10 240 V 60 Hz.  
E10-SF10 110 V 50 Hz  
F10-SF10 220 V 50 Hz



A	B	C
4.31	4.38	5.50



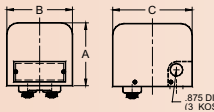
A	B	C
4.31	4.44	5.38

## A10-SJ10

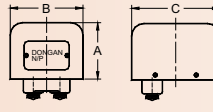
C10-SJ10 240 V 60 Hz.  
E10-SJ10 110 V 50 Hz  
F10-SJ10 220 V 50 Hz

## A10-SQ10

C10-SQ10 240 V 60 Hz.  
E10-SQ10 110 V 50 Hz  
F10-SQ10 220 V 50 Hz



A	B	C
4.25	4.44	5.38



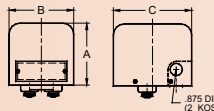
A	B	C
3.44	4.44	5.38

## A10-SQ35

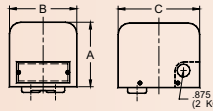
C10-SQ35 240 V 60 Hz.  
E10-SQ35 110 V 50 Hz  
F10-SQ35 220 V 50 Hz

## A10-SR10

C10-SR10 240 V 60 Hz.  
E10-SR10 110 V 50 Hz  
F10-SR10 220 V 50 Hz



A	B	C
4.25	4.44	5.38



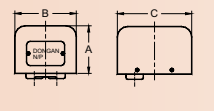
A	B	C
4.25	4.44	5.38

## A10-SV10

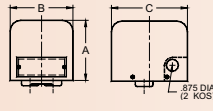
C10-SV10 240 V 60 Hz.  
E10-SV10 110 V 50 Hz  
F10-SV10 220 V 50 Hz

## A10-SV35

C10-SV35 240 V 60 Hz.  
E10-SV35 110 V 50 Hz  
F10-SV35 220 V 50 Hz



A	B	C
3.44	4.44	5.38

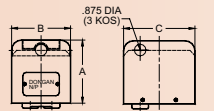


A	B	C
4.25	4.44	5.38

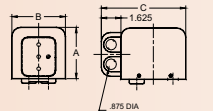
## A10-SW10

## A10-SY10

C10-SY10 240 V 60 Hz.  
E10-SY10 110 V 50 Hz  
F10-SY10 220 V 50 Hz



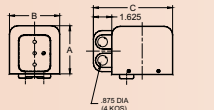
A	B	C
4.75	4.44	5.38



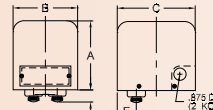
## A10-SP10

## A10-SX10

C10-SX10 240 V 60 Hz.  
E10-SX10 110 V 50 Hz  
F10-SX10 220 V 50 Hz



A	B	C
4.25	4.44	7.19



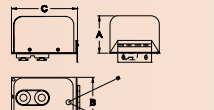
A	B	C	D	E
4.25	4.44	5.38	.38	.88

## A12-SV10

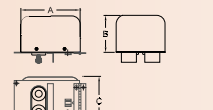
C12-SV10 240 V 60 Hz.

## A10-S32

Lennox



A	B	C
3.44	4.44	5.81



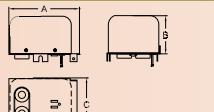
A	B	C
5.31	3.50	4.31

## A10-SK50

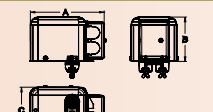
Beckett A & AF  
Heavy Duty Replacement

## A10-SV351

Arc Crane



A	B	C
5.31	3.50	4.44



A	B	C
7.19	4.31	4.44

## A10-SP18

Arco

\* Most Standard Replacement Transformers are available in 240V, 60 Hz models as well as 220, 50 Hz and 110V, 50 Hz variations. Contact your Dongan Representative or the factory for additional help.