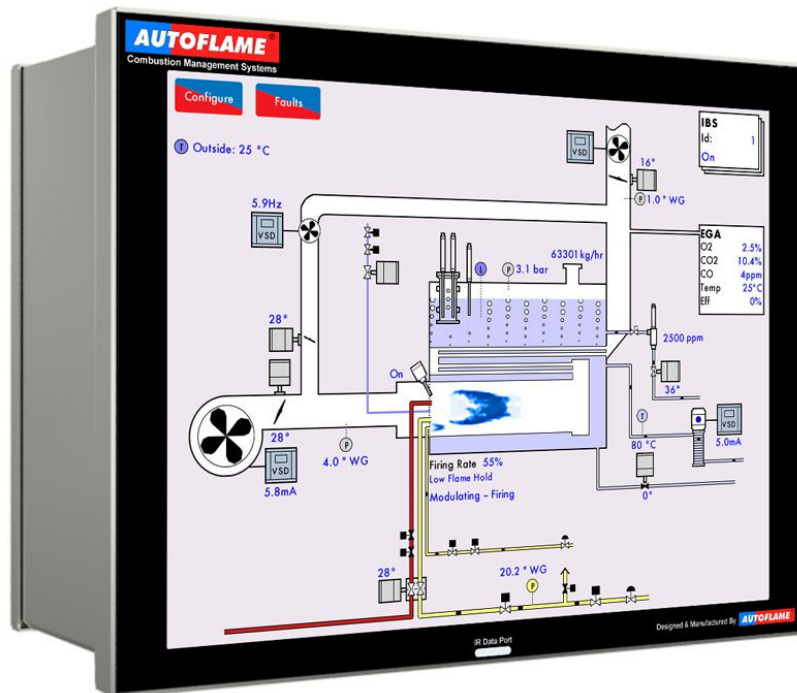


1 MM Control Modules & Parts

1.1 Mk8 MM Control Modules – MM Burner Management Systems



Mk8 MM

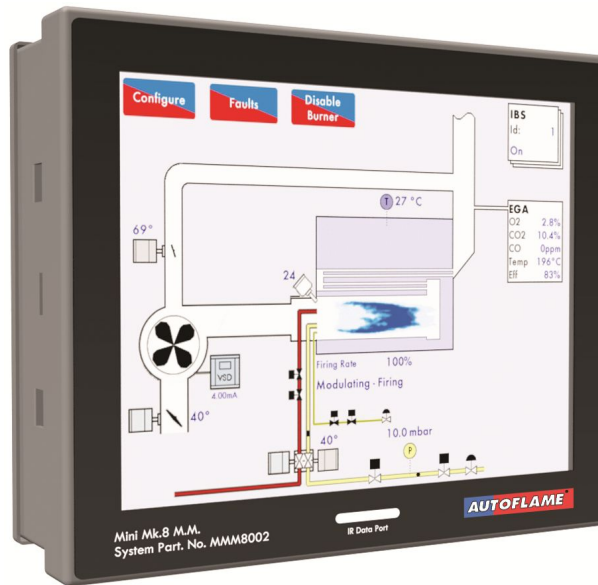
Mk8 MM Electrical Specifications

Classification according to BS EN298: 2012

Mains Supply:	Single phase 230V, +10%/-15%	47-63 Hz, unit max. consumption 140W
	Single phase 120V, +10%/-15%	
Climate:	Min. Temperature	0°C (32°F)
	Recommended Temperature	Less than 40°C (104°F)
	Max. Temperature	60°C (140°F)
	Humidity	0 to 90% non-condensing
Storage:	Temperature	-20 to 85°C (-4 to 185°F)
Protection Rating:	The unit is designed to be panel mounted in any orientation and the front facia is IP65, NEMA4. The back of the unit is IP20, NEMA1	

Item No.	MM Control Modules	Kgs	Part No.
1	Mk8 MM Module with Expansion Board fitted as standard 12.1" full colour touch screen, 7 channel with flame safeguard control	4.00	MM80001
Mk8 MM voltage is universal (230V/110V)			

1 MM Control Modules & Parts



Mini Mk8 MM

Mini Mk8 MM Electrical Specifications

Classification According to EN298: 2012

Mains Supply:	230V, +10%/-15%} 120V, +10%/-15%}	47-63 Hz, unit max. consumption 140W
Climate:	Min. Temperature Recommended Temperature Max. Temperature Humidity	0°C (32°F) Less than 40°C (104°F) 60°C (140°F) 0 to 90% non-condensing
Storage:	Temperature	-20 to 85°C (-4 to 185°F)
Protection Rating:	The unit is designed to be panel mounted in any orientation and the front fascia is IP65, NEMA4. The back of the unit is IP20, NEMA1.	

Item No.	MM Control Modules	Kgs	Part No.
2	Mini Mk8 Evolution Module 4 Channel with flame safeguard, 7" full colour touch screen	2.50	MMM8002
Mini Mk8 MM voltage is universal (230V/110V)			