



RFS-4100-040

APPLICATION

Model RFS-4100-040 is a general purpose proving switch designed for HVAC and Energy Management applications. This switch can be used to sense positive, negative, or differential air pressure.

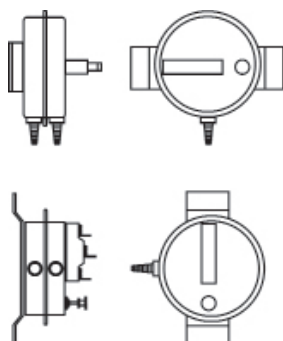
DESCRIPTION & OPERATION

The plated housing contains a diaphragm, a calibration spring, and a snap-acting switch. The sample line connections located on each side of the diaphragm accept $\frac{3}{16}$ ", $\frac{1}{4}$ ", and $\frac{5}{16}$ " flexible tubing via integral tri-barb connectors. The standard electrical connections are $\frac{1}{4}$ ", 90° quick-connect terminals.

MOUNTING (FIGURE 1)

Select a mounting location that is free from vibration. Mount with the diaphragm in any vertical plane in order to maintain the specified operating set point. Do not mount with the sample line connections in the "up" position. Surface-mounted via the two round holes (0.14" dia.) or two of the four slots ($\frac{3}{16}$ " wide) on the zinc-plated strap bracket. The mounting holes and slots are $3\frac{7}{8}$ " apart. Custom mounting brackets are available.

Figure 1:



AIR SAMPLING CONNECTION (FIGURE 2)

Tri-barbed sample line connectors designed to accept flexible tubing are situated on either side of the diaphragm as shown in Figure 2. The tri-barbed connectors accept $\frac{3}{16}$ ", $\frac{1}{4}$ ", and $\frac{5}{16}$ " ID flexible tubing. For sample lines up to 10 feet in length, $\frac{3}{16}$ " ID tubing is acceptable. For lines up to 20 feet, use $\frac{1}{4}$ " ID tubing. Install a sampling probe as close to the center of the air stream as possible. Locate the sampling probe a minimum of 1.5 duct diameters downstream from the air source.

Refer to Figure 2 to identify the high pressure inlet (H) and the low pressure inlet (L). Select one of the five application options listed below, and connect the sample lines as recommended.

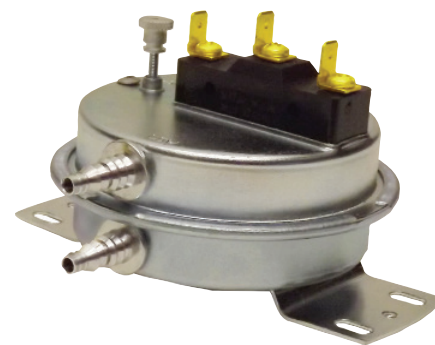
Positive Pressure Only: Connect the sample line to inlet H; inlet L remains open to the atmosphere.

Negative Pressure Only: Connect the sample line to inlet L; inlet H remains open to the atmosphere.

Two Negative Samples: Connect the higher negative sample to inlet L. Connect the lower negative sample to inlet H.

Two Positive Samples: Connect the higher positive sample to inlet H. Connect the lower positive sample to inlet L.

One Positive & One Negative Sample: Connect the positive sample to inlet H. Connect the negative sample to inlet L.



ELECTRICAL CONNECTIONS (FIGURES 3 & 4)

Before pressure is applied to the diaphragm, the switch contacts will be in the normally closed (NC) position. Wire control and alarm functions as shown in Figure 4.

FIELD ADJUSTMENT

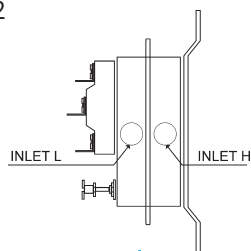
The adjustment range of an RFS-4100-040 Air Switch is 0.15 \pm 0.02" wc to 5.0"wc.

To adjust the set point, turn the adjusting screw counterclockwise until motion has stopped. Next, turn the adjusting screw 5 complete turns clockwise to engage the spring.

From this point, the next eight turns will be used for the actual calibration. Each full turn represents approximately 0.61" wc.

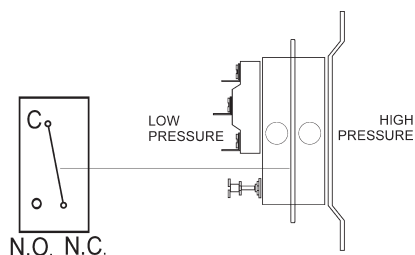
Please note: To properly calibrate an air switch, use a digital manometer or other measuring device to confirm the actual set point.

Figure 2



Inlet L	Inlet H
Positive Only	Negative Only
Lower Negative	Higher Negative
Higher Positive	Lower Positive

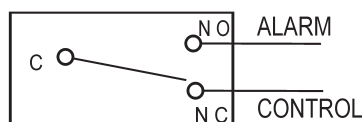
Figure 3



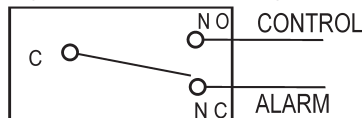
N.O. N.C.

Figure 4

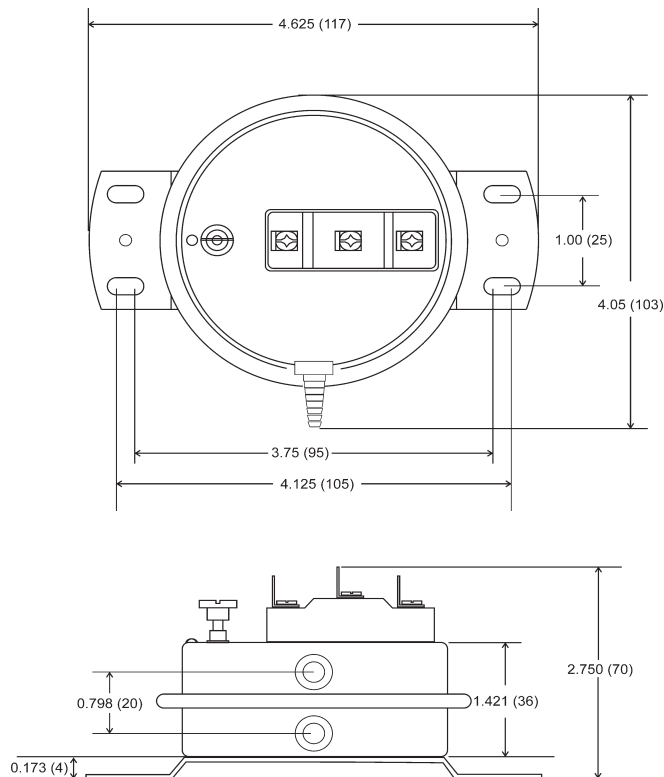
To prove excessive air flow or pressure:



To prove insufficient air flow or pressure:



Reference Dimensions in Inches (Millimeters)



SPECIFICATIONS RFS-4100-040



Mounting Position:

Mount with the diaphragm in any vertical plane.

Standard Set Point Range:

0.15 \pm 0.02" wc to 5.0" wc

Field Adjustable "Operate Range":

0.17" wc to 5.0" wc

Field Adjustable "Release Range":

0.10" wc to 4.7" wc

Approximate Switch Differential:

Progressive, increasing from 0.05 \pm 0.02" wc at minimum set point to approximately 0.3" wc at maximum set point

Measured Media:

Air or combustion by-products that will not degrade silicone

Maximum Pressure:

$\frac{1}{2}$ psi (0.03 bar)

Operating Temperature Range:

-40 to 180 $^{\circ}$ F (-40.0 to 82.2 $^{\circ}$ C)

Life:

100,000 cycles minimum at $\frac{1}{2}$ psi maximum pressure each cycle and at maximum rated electrical load

Electrical Rating

300 VA pilot duty at 115 to 277 VAC; 15 amp noninductive to 277 VAC, 60 Hz.

Contact Arrangement: SPDT

Electrical Connections:

$\frac{1}{4}$ " 90 $^{\circ}$ "quick-connect" spade terminals

Sample Line Connectors:

Tri-barb connectors accept $\frac{3}{16}$ ", $\frac{1}{4}$ " and $\frac{5}{16}$ " ID flexible tubing

Approvals: UL, CUL

Shipping Weight: less than 1 lb.