



UNITED BRASS WORKS, INC.
 714 S. Main St. Randleman, N.C. 27317
 Tel: 800-334-3035 Fax: 800-498-4696 www.ubw.com



Model 898 Bronze Size 7 Site Glass

**300 WSP @ 450 ° F Max
 600 WOG**

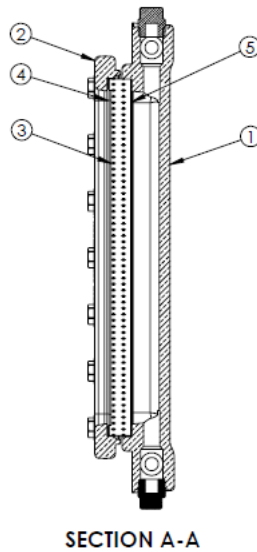
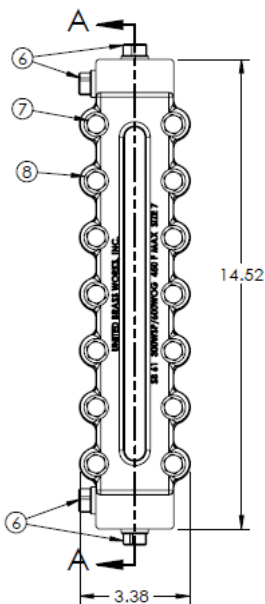
100% Pressure Tested • Threaded Ends

Designed to Boiler and Pressure Vessel Code Section 1 & ASME B31.1

Install Using United Brass Gauge Valve Sets Only. Can Be Used to Maintain 11 1/2" and 12 3/4" Center-To-Center Dimensions Depending on How They Are Installed.

Instructions Included With Valve Sets

Contains Lead. Not For Use in Potable Water Systems



MATERIAL LIST

NO.	DESCRIPTION	MATERIAL	QUANTITY
1	SIZE 7 GAUGE BODY	BRONZE CDA-922	1
2	COVER SIZE 7	BRONZE CDA-922	1
3	SIZE 7 REFLEX GLASS	BOROSILICATE	1
4	GAUGE GLASS CUSHION	KLINGER	1
5	GAUGE GLASS GASKET	GRAFOIL	1
6	BRASS PIPE PLUGS 1/2"	CDA-360	4
7	HEX HEAD CAP SCREW	STAINLESS STEEL	14
8	DISC SPRING WASHER	STAINLESS STEEL	14

APPLICABLE UBW GAUGE VALVE SETS

PART NO.	DESCRIPTION
900S	1/2" VALVE SET SLOW OPENING
900S	3/4" VALVE SET SLOW OPENING
900Q	1/2" VALVE SET QUICK OPENING
900Q	3/4" VALVE SET QUICK OPENING