



XTherm®
1005A (999 MBH Input)

Tag: B-10
Project: stock
Quantity: 1

Unit Information

Model Series: **XTherm®**
Size: **1005A (999 MBH Input)**
Fuel: **1**
Location: **Indoor**
Altitude: **0** ft

Heating Performance

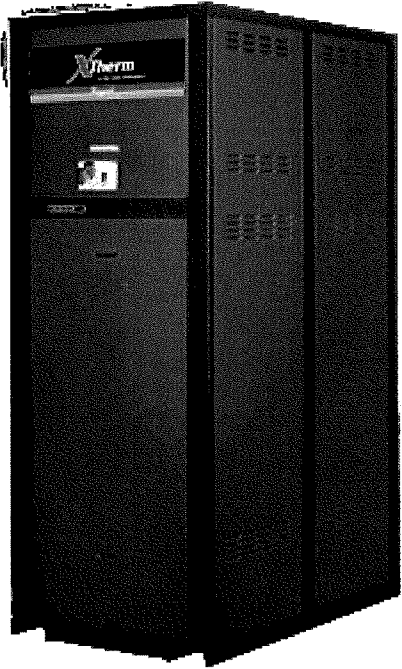
Input Temp: **130** F
Output Temp: **160** F
Design Capacity: **0** MBTUH
Input Capacity: **999** MBTUH
Output Capacity: **969** MBTUH
Thermal Efficiency: **97** %

Water Flow

Design Flow: gpm
Max Flow: **70** gpm
Min Flow: **70** gpm
Pressure Drop: ft. wg

General Unit Data

Unit Weight: **1163** lbs.
Unit Length: **50** in.
Unit Width: **31** in.
Unit Height: **55** in.



XTherm®



Product Data: Type H Hydronic Boiler

Qty	Description
1	Type H Hydronic Boiler

Tag(s): B-10**Selected Options**

Application : Standard Application

Location : Indoor

Size : 1005A (999 MBH Input)

Fuel Type : Natural Gas

Water Quality / Pump Selection Criteria : Soft Water (3 to 5 GPG)

Header Material : Bronze

Injector Pump : Built In Pump

Primary Heat Exchanger : Standard Copper

Pressure Relief Valve : A-12 60 PSIG (Standard for Boiler)

Ignition Module : 3-Try Standard Ignition - Auto Reset

Alarm : None

Manual Reset and Test Button : None

Codes : G-9 Kentucky

High Limit - Manual Reset : I-5 Adjustable Manual Reset Limit - 200 F

High Limit - Auto Reset : I-13 Adjustable Auto Reset Limit - 200 F

Safety Valves : None

Vent Valve : None

Low Gas Pressure Switch : S-1 Low Gas Pressure Safety Switch - Manual Reset

High Gas Pressure Switch : S-2 High Gas Pressure Safety Switch - Manual Reset

Low Water Pressure Switch : None

Condensate Treatment : Z-12 Condensate Treatment Kit

Elevation : Below 2000 ft (0 – 1999 ft)

Selected Accessories

Xtherm H Size A Standard Features

Qty: 3 Tags: B-10, B-11, B-12

Standard Features

Heat Exchanger

- ASME H Stamped; 160 PSIG MAWP
- National Board Listed
- ASME Powder-Coated Tube Sheet
- Silicone High Temp O-Rings
- Manual Air Bleed
- T&P Gauge (shipped loose for field installation by others)
- Secondary Stainless Steel Condensing Heat Exchanger – U stamped
- Stainless Steel Evaporator Plate

Control

- 120V, 60Hz, 1Ø, Power Supply
- 120/24V 60Hz Transformer
- VERSA ICØ
- 7" color HD touchscreen display
- Raymote™ Wi-Fi remote connectivity
- Remote flame sensor
- Fixed high limit, manual reset, 240°F
- Freeze Protection
- Alarm Dry Contact
- On/Off Power Switch
- Flow Switch
- Blocked Vent Pressure Switch
- Pump Outputs – Pilot Duty
 - DHW Indirect
 - System
- Programmable Pump Time Delays
- Modulating Temperature Control; 7:1 turndown
- Water Temperature Sensors (7)
- Cold Water Protection – Built In
- Blocked Condensate Switch

Burner

- Hot Surface Ignition (HSI)
- Radially Fired Knitted Burner

Gas Train

- Dual-Seal Combination Valve
- Manual Shut Off Firing Valve

* Requires 200°F Manual Reset High Limit & 180°F Max Setpoint

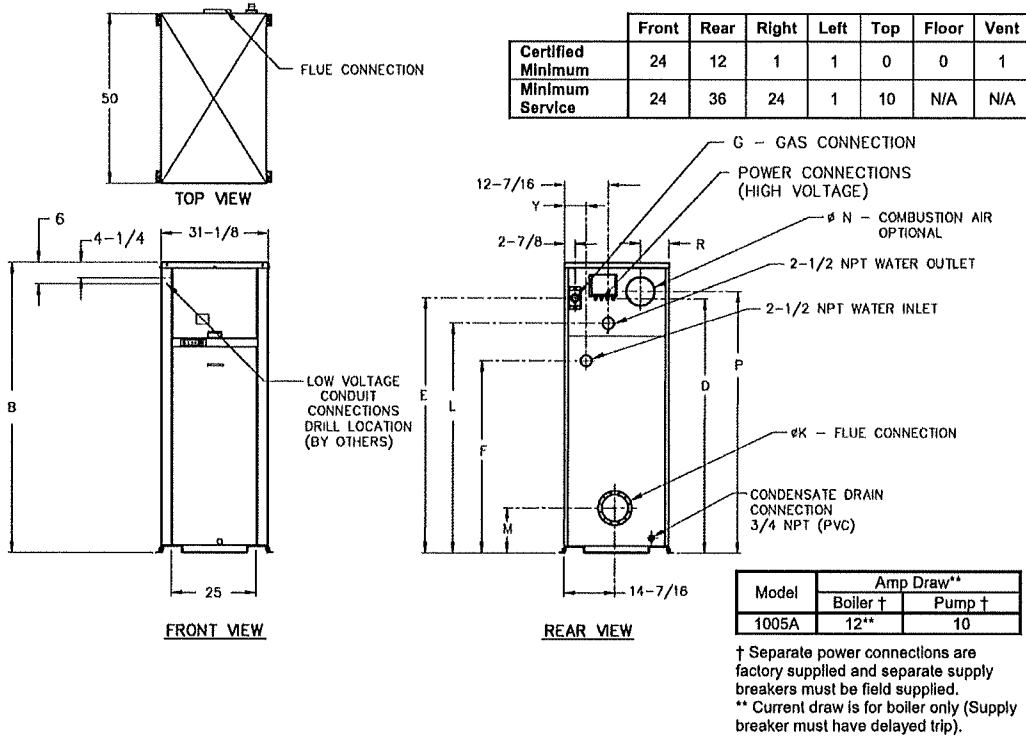
Construction

- Indoor/outdoor construction
- Enclosed front controls
- PolyTuf powder coat finish
- Rear Connections (water, gas, vent, electrical, comb. air, cond. drain)
- Design certified ANSI Z21.13/CSA 4.9
- Front Connection Low Voltage Wiring
- 100% Factory Fire Tested
- Full Electronic Modulation, Constant Ratio 7:1 Turndown
- Full Safety Diagnostics with History
- Status Display Lights
- Cascade up to 4 Heaters – No External Sequencer Required
- Modbus RTU BMS Port
- Limited Twenty-Five-Year Thermal Shock Warranty
- Limited Ten-Year Primary Heat Exchanger Warranty
- Limited Ten-Year Secondary Heat Exchanger Warranty
- Proudly Assembled in the USA

XTherm H Dimensions 1005A

Qty: 1 Tags: B-10

NOTE: Primary/Secondary plumbing is mandatory for proper operation.



Model (H7-)	MBTUH		Dimensions (In)												Ship Weight (Lbs.)
	Input	Output	B Height	D	E	F	G* NPT	K Flue Ø	L	M	N C/A Ø	P	R	Y	
1005A	999	959	55-1/8	45	47-1/8	36-1/2	1-1/4	6	40-1/16	11-1/2	6	47-1/8	8-1/16	6-1/16	1065

Note: Ratings shown are for elevations up to 4,500 feet. For installations at elevations above 4,500 feet, please consult the factory for additional instructions.

* For Propane Gas, all models are 1" NPT

System Return Temp (°F)	Model 1005A		
	Supply Temp ¹ (°F)	Minimum Pipe Size ²	
		<80' eq	80-200' eq
60	138	2" NPT	2-1/2" NPT
80	138	2" NPT	2-1/2" NPT
100	138	2-1/2" NPT	3" NPT
120	145	2-1/2" NPT	3" NPT
140	165	2-1/2" NPT	3" NPT
160	185	2-1/2" NPT	3" NPT

¹ - Approximate high fire heater outlet temperature based on the standard heater pump and recommended connecting pipe size.

² - Minimum pipe size based on total equivalent feet of supply and return piping between the system loop and heater.