



XVers Powered by KOR
H7-1007 (999 MBH Input)

Tag: **B-02**
Project: **stock**
Quantity: **1**

Unit Information

Model Series: **XVers® Powered by KOR**
Size: **H7-1007 (999 MBH Input)**
Fuel: **Natural Gas**
Location: **Indoor**
Altitude: **0** ft

Heating Performance

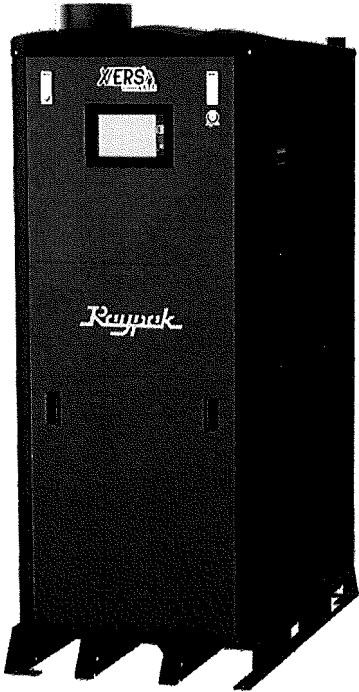
Input Temp: **130** F
Output Temp: **160** F
Design Capacity: **0** MBTUH
Input Capacity: **999** MBTUH
Output Capacity: **952** MBTUH
Thermal Efficiency: **95.3** %

Water Flow

Design Flow: gpm
Max Flow: **200** gpm
Min Flow: **14** gpm
Pressure Drop: ft. wg

General Unit Data

Unit Weight: **1450** lbs.
Unit Length: **56.3** in.
Unit Width: **24** in.
Unit Height: **71.6** in.



XVers® Powered by KOR



Product Data: Type H Hydronic Boiler

	Description
Tag(s): B-02	Type H Hydronic Boiler

Selected Options

Size: H?-1007 (999 MBH Input)
Fuel Type : Natural Gas
Location : Indoor
Pressure Relief Valves: A-12 60 PSIG
Ignition Module: 3-Try Standard Ignition - Auto Reset
Outdoor Vent Cap : None
Power Supply (Factory Installed): 120V-60Hz
Alarms : None
Codes : G-9 Kentucky
High Limit - Manual Reset : 1-5 Adjustable Manual Reset Limit - 200 F
High Limit-Auto Reset: 1-13 Adjustable Auto Reset Limit- 200 F
Safety Valves (Shipped Loose): None
Vent Valve (Shipped Loose): None
Variable Speed Pumps : None
Fixed Speed Pumps : None
Low Gas Pressure Switch : S-1 Low Gas Pressure Safety Switch - Manual Reset
High Gas Pressure Switch : S-2 High Gas Pressure Safety Switch - Manual Reset
Condensate Treatment Kit: Z-12 Condensate Treatment Kit
BAS/BMS Gateway Protocol Convertor : None
H02T Track & Trim : None
Elevation : Below 2000 ft (0 - 1999 ft)
Suction Diffuser (Shipped Loose): P-171 Suction Diffuser

Selected Accessories

XVets With KOR Standard Features

Qty: 3 Tags: B-01, B-02, B-06

Standard Features

Heat Exchanger

- 316L stainless steel for tubing/flue side components
- 304 stainless steel water inlet/outlet and shell
- ASME H-stamped; 160 PSIG MAWP
- National Board registered
- T&P gauge

Control

- VERSA IC® modulating temperature control system
- 7" color touchscreen display
- Fault history with full diagnostics
- Status display lights
- Raynote™ IoT connectivity
- 24VAC 60Hz transformer
- 15VDC transformer
- Remote flame sensor
- Fixed high limit, manual reset, 200°F
- Vent temperature sensor
- Off-idle-run power switch
- Low water cut off
- Flow switch
- Water flow sensor
- Blocked vent pressure switch
- Freeze protection
- Alarm dry contact
- Programmable pump time delay outputs (pilot duty)
- Pump control relays
 - Boiler
 - Systems
 - Indirect DHW
- Outdoor air sensor (shipped loose for field installation by others)
- Water temperature sensors (5 total)
 - Inlet (factory mounted and wired)
 - Outlet (factory mounted and wired)
 - Indirect (shipped loose for field installation by others)
 - Temperature to Indirect (shipped loose for field installation by others)
 - Cascade sensor (shipped loose for field installation by others)
- Blocked condensate switch
- Modbus RTU BMS port

Burner

- Hot surface ignition (HSI)
- Easily accessible radially-fired knitted burner

Gas Train

- Engineered modulating fuel to air flow system for precision combustion
- Rich-Start ignition system (patent pending, natural gas and/or propane, depends on unit input rate)
- Single gas valve body with 2 safety shutoff valves
- Manual shut-off gas valve
- Built-on external sediment trap (standard)

Vent Options

- Ready to vent with stainless steel
- Adapter required for polypropylene, PVC & CPVC (max. setpoint 230°F, 149°F and 194°F, respectively)

Construction

- Indoor/outdoor construction
- PolyTuf powder coat finish (no VOC)
- Front accessible junction box and transformer
 - Low voltage terminal strip
 - Easy access for maintenance and troubleshooting
- Rear connections (water, gas, vent; electrical, condensate drain, high voltage terminal block, pump connections)
- Front accessible combustion air filter
- Combustion air inlet on top of unit
- Design certified ANSI Z21.13/CSA 4.9
- Built-in lifting lugs for rigging
- Built-in flue gas analysis port
- Forklift or pallet jack accessible from front, back and sides
- Seismic anchor-ready base
- Indoor/outdoor construction - standard
- Limited 10-year heat exchanger warranty
- Supports primary/secondary and primary piping
- Freeze protection integrated with VERSA IC
- SCAQMD rule 1146.2 certified[2] - Low NOx <20 ppm
- BAAQMD rule 9-7-307.1 certified[3] - Low NOx <30 ppm
- SJVAPCD rule 4307 and 4308 propane certified - Low NOx <30 ppm
- Proudly assembled in the USA

[1] Appropriate venting material selection to be based on setpoint and Delta T. Max setpoint for PVC venting is 140°F.

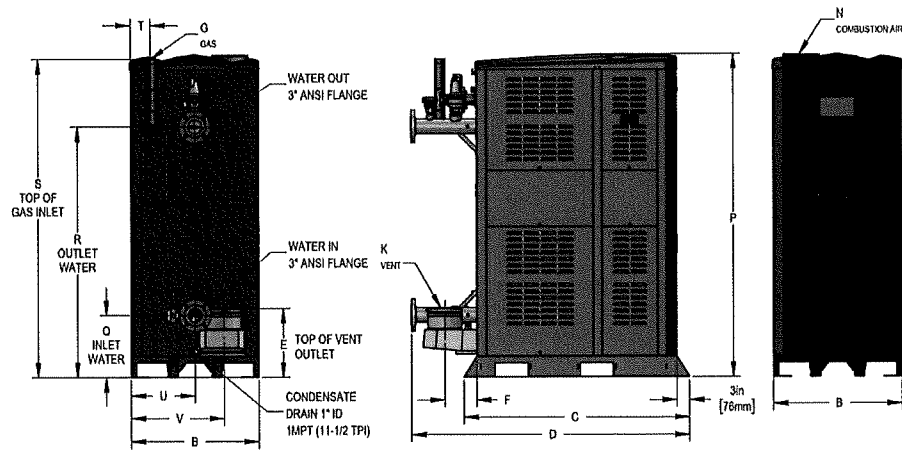
[2] SCAQMD rule 1146.2 certification is only applicable for units up to 2000 MBTUH input.

[3] BAAQMD rule 9-7-307.1 certification is only applicable for units above 2000 MBTUH input.

[4] Energy Star is only applicable for units below 2500 MBTUH input.

XVers With KOR Dimensions 1007 1

Qty: 1 Tags: B-02



Model	MBTU/h (kW)		Minimum BTU/h (kW) Input	Turn Down	AHRI Thermal / Combustion Efficiency (%)	Dimensions - Inches (mm)																Shipping Weight lbs. (kg)	Water Content gal. (L)
	Input	Output				B Width	C Base Depth	D Overall Depth	E	F	G NPT	K Flue Ø	N C/A Ø	P	Q	R	S	T	U	V			
1007	999 (293.1)	952 (279.0)	100,000 (29.3)	10:1	95.3 /	24 (610)	44 (1118)	56.3 (1430)	16 (406)	8.1 (195)	1-1/4 (31.75)	6 (152)	8 (152)	71.6 (1818)	14.4 (365)	58.2 (1478)	73.0 (1853)	4.9 (124)	12 (305)	18.5 (470)	1,220 (553)	50 (189)	

Clearances - Inches (mm)

	Front	Rear Indoor	Rear Outdoor	Right	Left	Top Indoor	Top Outdoor	Floor*	Vent Indoor	Vent Outdoor
Combustible Minimum	Open	24 (610)	12 (305)	1 (25)	1 (25)	0	Unobstructed	0	1 (25)	Open
Minimum Service	30 (762)	24 (610)	24 (610)	1 (25)	1 (25)	24 (610)	Unobstructed	0	1 (25)	Open

*WARNING: Do not install on carpeting.

Model	Boiler Current Draw (Amps)				
	120VAC	208VAC	240VAC	480VAC	600VAC
1007	<7.0	<3.0	<2.0	<1.0	<1.0

NOTE: Boiler current only. Does not include pump current.

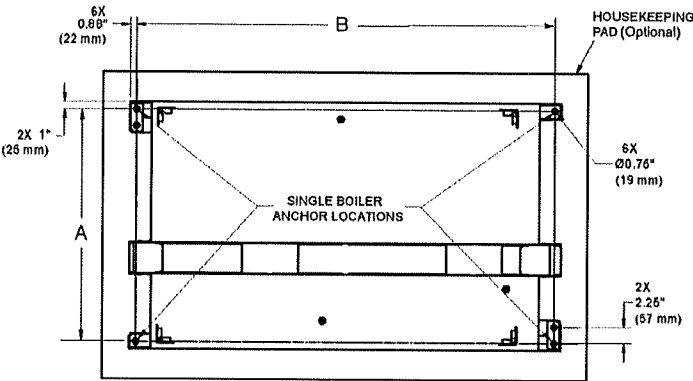
Rates of Flow and Pressure Drops																	
Model	Input MBTU/h (kW)	Output MBTU/h (kW)	20° ΔT					33° ΔT					40° ΔT				
			GPM (L/min)	ΔP ft/hd (kPa)	SHL			GPM (L/min)	ΔP ft/hd (kPa)	SHL			GPM (L/min)	ΔP ft/hd (kPa)	SHL		
					2.5" Pipe	3" Pipe	4" Pipe			2.5" Pipe	3" Pipe	4" Pipe			2.5" Pipe	3" Pipe	4" Pipe
1007	999 (293.1)	952 (279.0)	95 (360)	1.91 (5.7)	8.40 (25.1)	4.09 (12.2)	2.48 (7.4)	60 (227)	0.8 (2.4)	3.51 (10.5)	1.74 (5.2)	1.04 (3.1)	48 (181)	0.43 (1.3)	2.22 (6.8)	1.06 (3.2)	0.59 (1.8)

XVers With KOR Dimensions 1007 2

Qty: 1 Tags: B-02

Rates of Flow and Pressure Drops (Cont.)										
Model	60° ΔT				Min. Flow for Ignition*		Min. Flow for Full Fire (75°F ΔT)*		Max. Flow**	
	GPM (L/min)	ΔP ft.hd (kPa)	SHL			GPM (L/min)	ΔP ft.hd (kPa)	GPM (L/min)	GPM (L/min)	ΔP ft.hd (kPa)
			2.5" Pipe	3" Pipe	4" Pipe					
1007	32 (121)	0.22 (0.7)	1.07 (3.2)	0.52 (1.6)	0.29 (0.9)	14 (53)	0.3 (0.9)	29 (110)	200 (757)	7.7 (23.0)

*Minimum flow based on water as a heating medium. Any other medium may require higher minimum flow rates. **Maximum flow inside the boiler is based on 10.5 ft per second velocity. Maximum velocity in the piping, and pipe sizing, must comply with applicable local building code requirements.
ΔP = Boiler pressure drop (feet of head).
SHL = System head loss of the boiler, plus 100 equivalent feet (30 m) of pipe.



Engineered Base

Model	A In. (mm)	B In. (mm)	Operating Weight lbs. (kg)
1007	21.75 (552)	42.0 (1066)	1,450 (657)

Optional Pump Information

Model	Fixed-Speed Boiler Pump					
	TACO MDL	HP	Impeller	Amps @115VAC*	GPM FT/HD	ΔT (°F)
1007	0012-F4	1/8		1.33	49 / 1.5	40

Model	Variable-Speed Boiler Pump					
	TACO MDL	HP	Amps @110-240 VAC*	Amps @230-240 VAC*	GPM FT/HD	ΔT (°F)
1007	0034E-F2	0.013 - 0.23	1.48		50 / 2.0	38

NOTE: Head (ft) based on 3" - schedule 40 pipe, except model 4007 which is 4" schedule 40 pipe.
*For primary/secondary operation, boiler pump requires independent leg of voltage with breaker.